



# GMT MONTHLY MEMBERSHIP PROGRESS REPORT

Results as of: 6/30/2018

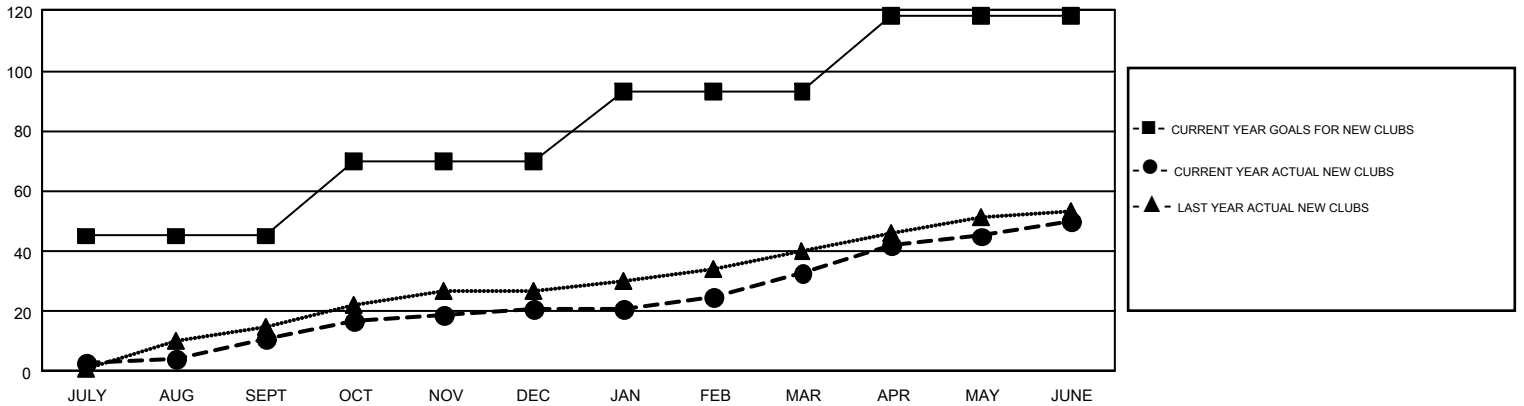
## GMT Constitutional Area 7, Group C

GMT: EVELINE CHANDRA

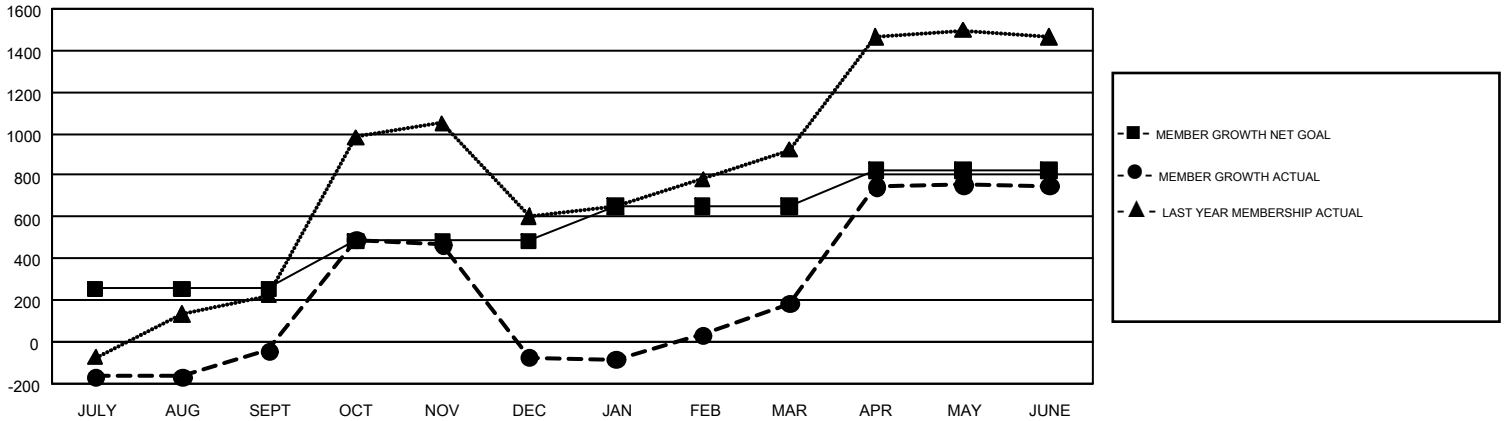
REPORT DOES NOT INCLUDE CLUBS IN UNDISTRICTED AREAS.

Clubs				Members			
RESULTS FOR 2017-2018				RESULTS FOR 2017-2018			
QUARTER	NEW CLUB GOAL	NEW CLUBS	DROPPED CLUBS	QUARTER	MEMBER GROWTH NET GOAL	MEMBER GROWTH ACTUAL	DROPPED MEMBERS ACTUAL (including transfers)
JULY/AUG/SEPT	45	11	5	JULY/AUG/SEPT	255	599	590
OCT/NOV/DEC	25	10	5	OCT/NOV/DEC	230	857	826
JAN/FEB/MAR	23	12	3	JAN/FEB/MAR	165	616	319
APR/MAY/JUNE	25	17	2	APR/MAY/JUNE	175	1,877	1,231

GOALS AND ACTUAL NEW CLUBS CUMULATIVE



GOALS AND ACTUAL MEMBERS CUMULATIVE



DROPPED CLUBS: 15	292 CLUBS OF 379 ADDED 1 OR MORE NEW MEMBERS	<u>GENDER DISTRIBUTION</u>	
<u>DROPPED MEMBERS</u>		MALE	4,909 (45.18%)
DECEASED	26	FEMALE	5,957 (54.82%)
CLUB CANCELLED	44	TOTAL FAMILY UNIT MEMBERS 0	
OTHER	2,896		
TOTAL	2,966		
<a href="#">CLICK HERE FOR CUMULATIVE MEMBERSHIP DATA</a>			